

Self-discharging bin ST

TORNUM's self-discharging bin ST is specially designed for storing grain, and is available in several sizes.



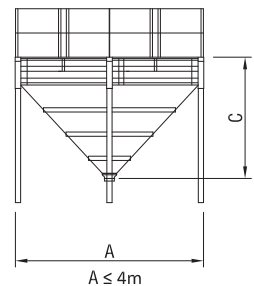
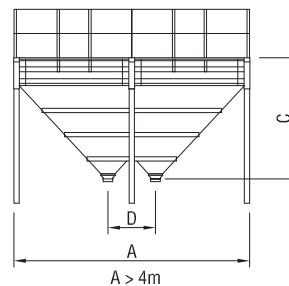
STRUCTURE AND FUNCTION

- Made of hot-dip galvanized sheet metal.
- Each section has a vertical height of 505 mm.
- Can be expanded by adding sections onto the main hopper.
- A smooth inside makes it easy to clean and suitable for wet storage.
- The construction allows several assembly methods, which saves time.
- The outlet is 200 x 200 mm.
- The hopper is completely screwable and equipped with square legs.



Options

- Level indicator
- Temperature monitoring
- Discharge slide
- Roof with manhole
- Partition wall
- Aeration ducts



Model	A (mm)	B (mm)	C (mm)	D (mm)	No. of legs	Volume taper (m ³)	Volume section (m ³)
2x2	2020	2020	1560	*	4	3.1	1.8
2x2.5	2020	2515	1675	*	4	4.2	2.3
2x3	2020	3010	1905	*	4	5.4	2.8
2.5x2.5	2515	2515	1905	*	4	5.6	2.9
2.5x3	2515	3010	2010	*	4	7.0	3.5
2.5x4	3930	2515	2525	*	6	11.6	4.6
2.5x5	4920	2515	2525	990	6	14.7	5.8
2.5x6	5910	2515	2010	2900	6	14.0	7.0
3x3	3010	3010	2095	*	4	8.8	4.2
3x4	3930	3010	2370	*	6	13.4	5.6
3x4.5	4425	3010	2370	495	6	15.3	6.3
3x5	4920	3010	2370	990	6	17.2	7.0
3x6	5910	3010	2095	2900	6	17.6	8.4

* One outlet in center.

